

Stainless Steel Cleaner

Product Usage Guide

Professional

BB006-75



Health & Safety

Please refer to relevant COSHH Safety Data Sheet



Scan for further product details



1 Use appropriate PPE as indicated in the Safety Data Sheet.



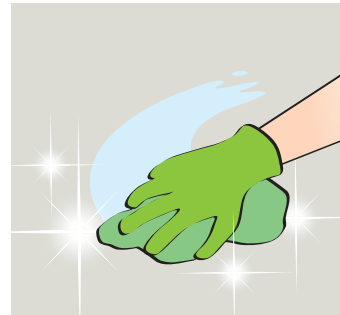
2 Place Safety Signs.



3 Spray solution onto cloth or directly onto surface.



4 Wipe clean and polish surface.



5 Buff surface to a shine.



6 Once surface is dry remove Safety Signs.



Do not decant.