

our mini guide to using... rinse aid



application and directions

Dishwashers / Cabinet Glass Washers:

Pour undiluted directly into machines automatic dosage system and use in accordance with the manufacturer's recommendations. Dose according to the degree of soil, and the water hardness. Follow the dosing instructions and adjust to maximise performance. More effective cleaning will be achieved at higher temperatures.

Soft water: 0.1%	Medium water: 0.2%	Hard water: 0.4%
----------------------------	------------------------------	----------------------------

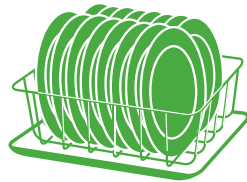
Combi ovens:

Pour undiluted directly into the integral dosage system and use in accordance with the machine manufacturer's recommendations. Dose according to the degree of soil, and the water hardness. Follow the dosing instructions and adjust to maximise performance via the oven control panel. Normally 0.1% - 0.4% is satisfactory.

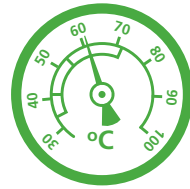
Proper dosage saves cost and minimises environmental impact: Using this EU Ecolabelled product according to the dosage instructions will contribute to the reduction of water pollution and waste production. Delphis Eco encourage users to reduce waste going to landfill by recycling empty bottles.



Remove food scraps from plates and rinse with water



Rack all plates in the same direction



Wash 55 - 65 °C

main use



COSHH

Non hazardous

health and safety

Use only as directed. Do not mix different cleaners. Seek medical attention if in discomfort or if any symptoms persist.

Eye Contact: Avoid contact with eyes, if product gets into eyes, rinse with water.

Skin Contact: Avoid contact with skin, if product gets onto skin wash with water and remove any contaminated clothing.

Ingestion: Do not drink, if swallowed drinking water may be beneficial, do not induce vomiting.

Inhalation: Avoid inhaling product, move to fresh air if in discomfort.

COSHH: Not classified as hazardous.

don't forget PPE...



Always wear the correct protective clothing if required. For best results we recommend using the correct dosing and colour coded microfibre cloths - please ask your manager for details.

how to dispose...

Dirty, used washing solution should be disposed of via drains that lead only to foul sewers. Do not allow detergent solutions to contaminate surface water drains. In the event that concentrated product should need to be disposed of, run small amounts to foul waste, diluting with plenty of water. For larger quantities, seek advice on disposal from the local authorities. Delphis Eco products are packed in fully recyclable containers. Empty containers should be rinsed thoroughly, the washings being run to foul waste. The containers may then be sent for recycling. Dispose of all waste in a responsible manner. Be aware of the environment.



For further information and safety data sheets, contact:

Delphis Eco, Unit 1, River Reach, Gartons Way, London SW11 3SX t: +44 (0) 203 397 0096 f: +44 (0) 870 974 7219 e: sales@delphiseco.com www.delphiseco.com

